

Districtwide K -12 Rezoning
Community Input Session
Spring 2023

Why rezone?

- Last rezoning of entire district was 1983
- Changes affecting attendance since then include population growth, new development, migration within the county, school choice options (magnets, charters, vouchers, etc.)
- 20 of 36 schools currently overcrowded (90%+ over capacity)
- 4800 empty seats district-wide (including vacant schools)
- Facilities and operating funds not being used effectively, meaning less money for teaching and learning

Why not build more space?

- New construction is extremely expensive
- Facilities funding is limited
- State limitations on new construction
- Strain on core facilities
- Lack of space/infrastructure at some schools for new construction

Enrollment Table (03.10.2023): Elementary

School	Enrolled	Capacity	% Utilization	Magnet Programs
Elementary				
Newberry ES (PK-4)	665	471	141%	
Littlewood	724	588	123%	
Wiles	872	725	120%	
Meadowbrook	874	758	115%	
Parker	520	489	106%	
Hidden Oak	790	744	106%	
Chiles	748	727	103%	
Rawlings	427	427	100%	Center for Fine Arts
Foster	457	467	98%	STEM Magnet
High Springs (PK-8)	987	1,009	98%	
Shell	349	366	95%	
Archer	457	489	93%	Gifted and Talented Studies
Glen Springs	431	463	93%	
Talbot	658	726	91%	
Norton	595	669	89%	
Williams	479	590	81%	Williams Magnet
Idylwild	514	662	78%	
Metcalfe	467	624	75%	STEAM Magnet
Irby (PK-2)	381	536	71%	
Terwilliger	618	962	64%	Dual Language Immersion
Alachua ES (3-5)	326	525	62%	
Lake Forest	334	598	56%	
Elementary Totals	12,673	13,615	93%	

- 2522 empty elementary seats district-wide, including capacity at three vacant schools—Duval, Prairie View, old Terwilliger campus
- 942 empty seats if vacant school capacities are excluded
- There are no current plans to transition vacant sites back to traditional schools
- High Springs population includes elementary and middle school students

Enrollment Table (03.10.2023): Middle

School	Enrolled	Capacity	% Utilization	Magnet Programs
Middle				
Fort Clarke	955	871	110%	
Kanapaha	1,105	1,166	95%	
Oak View (5-8)	974	1,063	92%	Center for Advanced Academics and Technology
Bishop	837	1,075	78%	Academy of Technology and Advanced Studies
Westwood	844	1,112	76%	
Lincoln	722	1,053	69%	The Lyceum Center for Advanced Studies
Mebane	336	788	43%	Biomedical Mustangs
Middle Totals	5,773	7,128	81%	

- 1355 empty middle school seats district-wide
- Oak View Middle enrollment includes students in grades 5-8

Enrollment Table (03.10.2023): High

School	Enrolled	Capacity	% Utilization	Magnets
High				
Buchholz	2,489	2,006	124%	Entrepreneurship Finance
Newberry HS	707	671	105%	Criminal Justice
Gainesville	1,804	1,926	94%	Cambridge Future Teachers Health Professions
Santa Fe	1,141	1,291	88%	Agriscience Veterinary Assisting Biotechnology
Hawthorne (6-12)	457	660	69%	Agribusiness
Eastside	1,208	1,952	62%	International Baccalaureate Culinary Arts
Loften	268	508	53%	Automotive Technology Fire & EMS Gaming & Mobile Apps Graphic Art & Design Media Production Technology Robotics & Engineering
High Totals	8,074	9,014	90%	

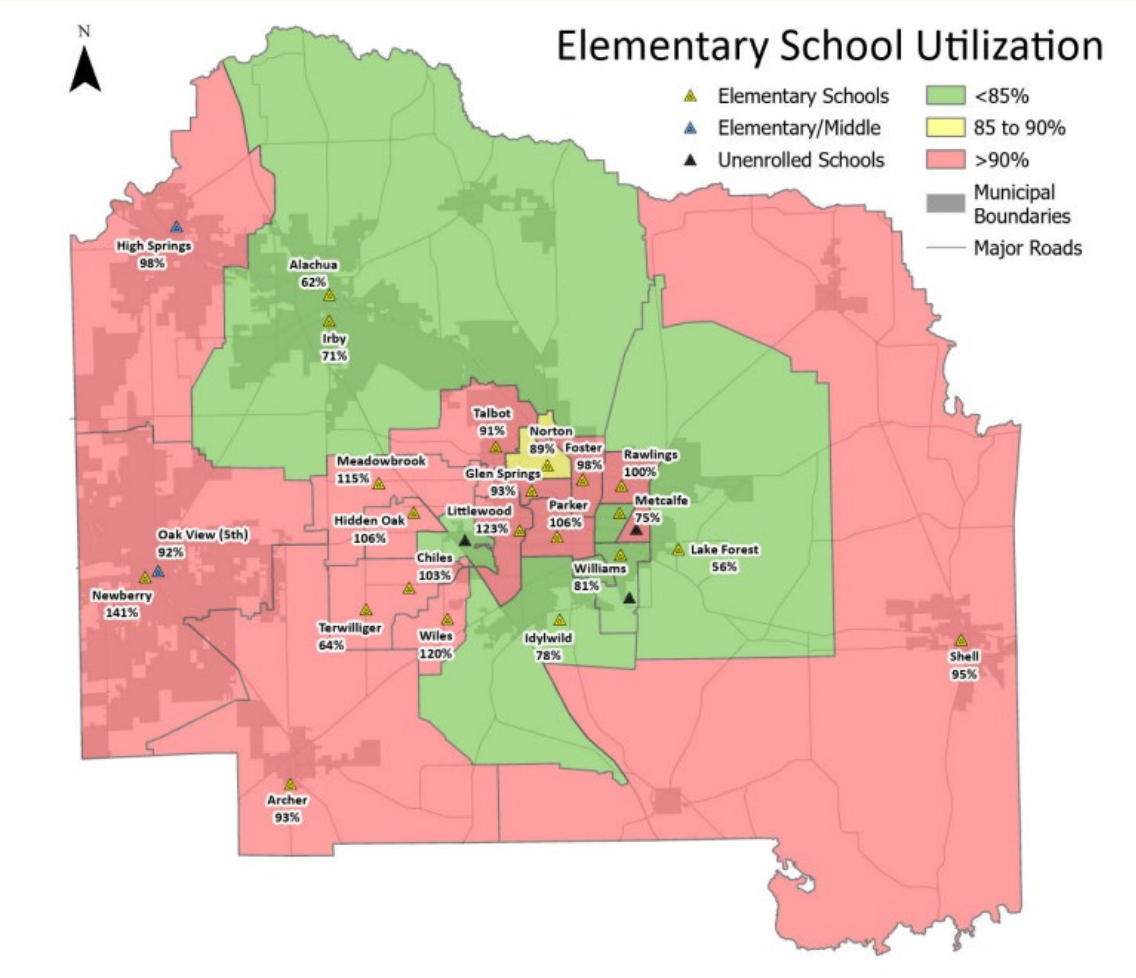
- 940 empty high school seats district wide
- Hawthorne enrollment includes students in grades 6-12
- PAM@Loften is a school of choice for students district-wide and has no geographic attendance zone

Enrollment Table (03.10.2023): Special Centers*

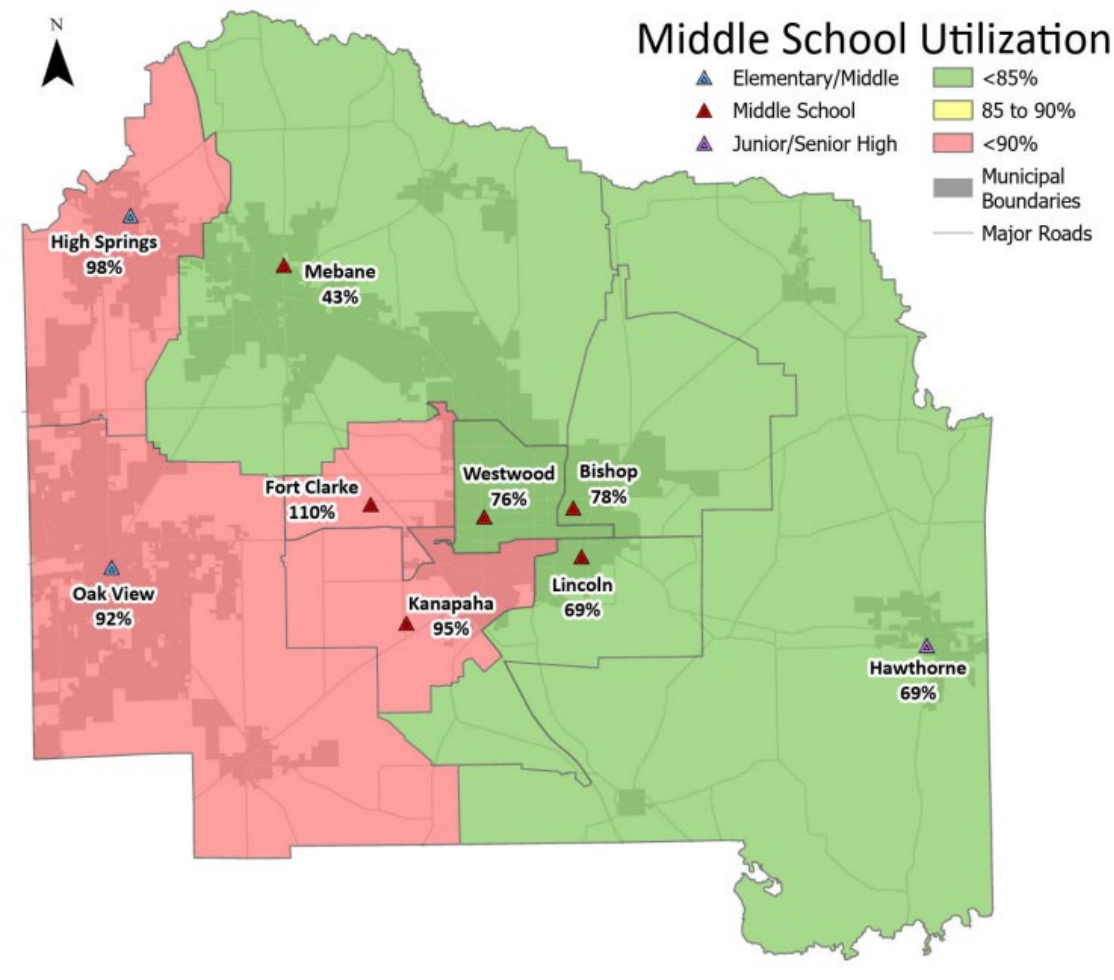
School	Enrolled	Capacity	% Utilization
Centers			
A. Quinn Jones (6-12)	102	181	56%
Sidney Lanier (K-12)	161	369	44%
Center Totals	263	550	48%

*Because A. Quinn Jones and Sidney Lanier serve student populations which require specialized services, reaching full capacity is not a goal for these facilities, and they will not be part of the rezoning process.

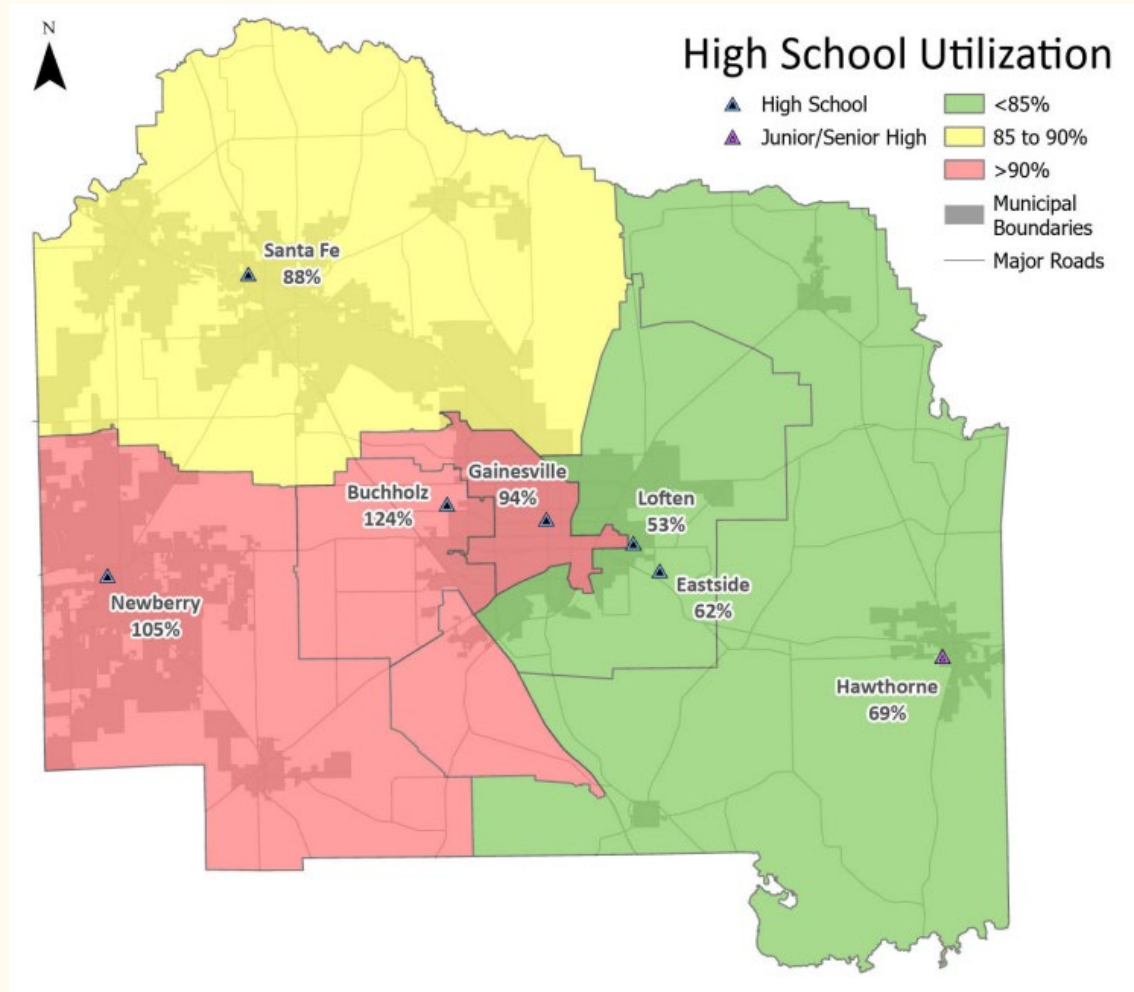
Enrollment Maps: Elementary



Enrollment Maps: Middle

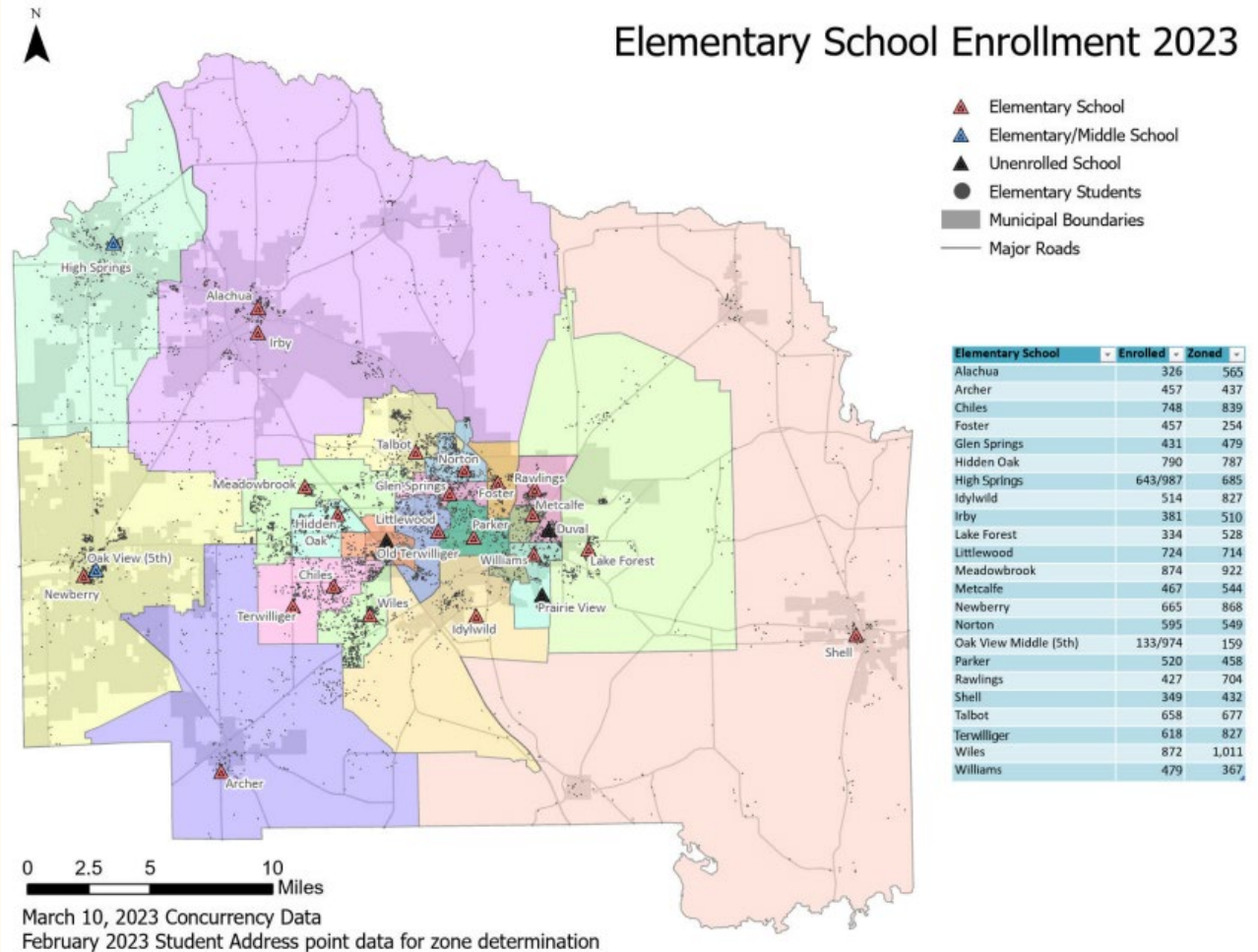


Enrollment Maps: High

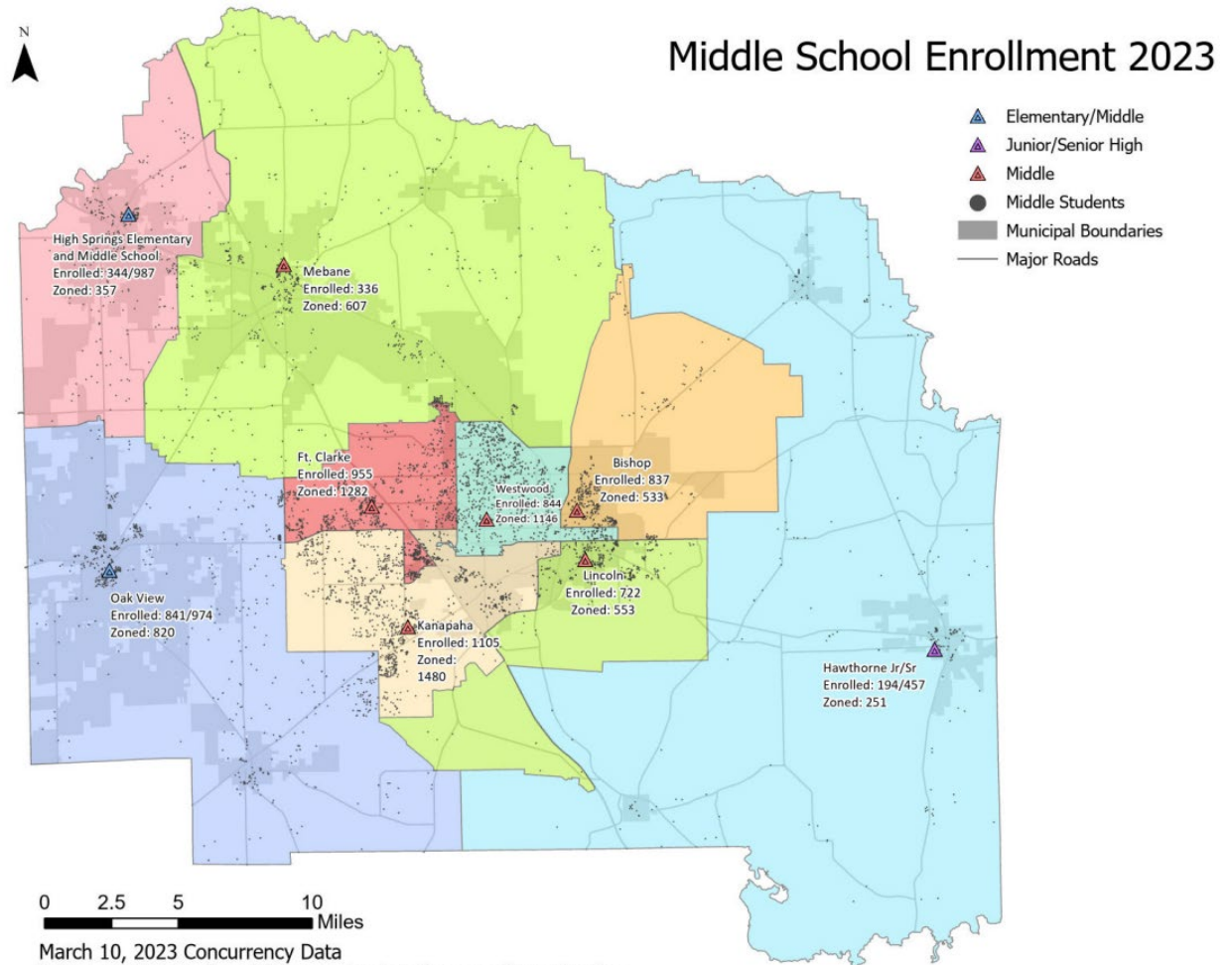


Student Population Maps: Elementary

Elementary School Enrollment 2023

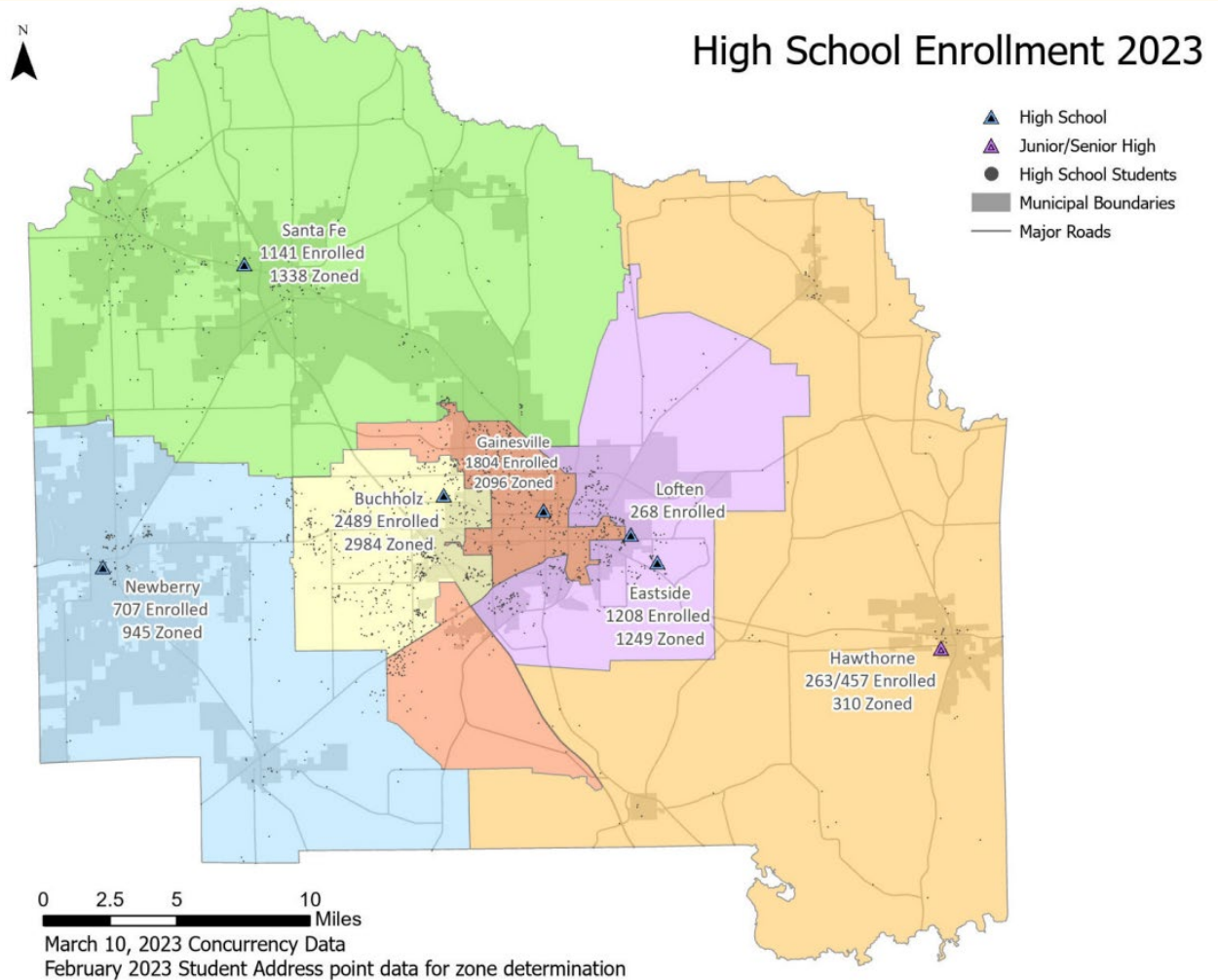


Student Population Maps: Middle



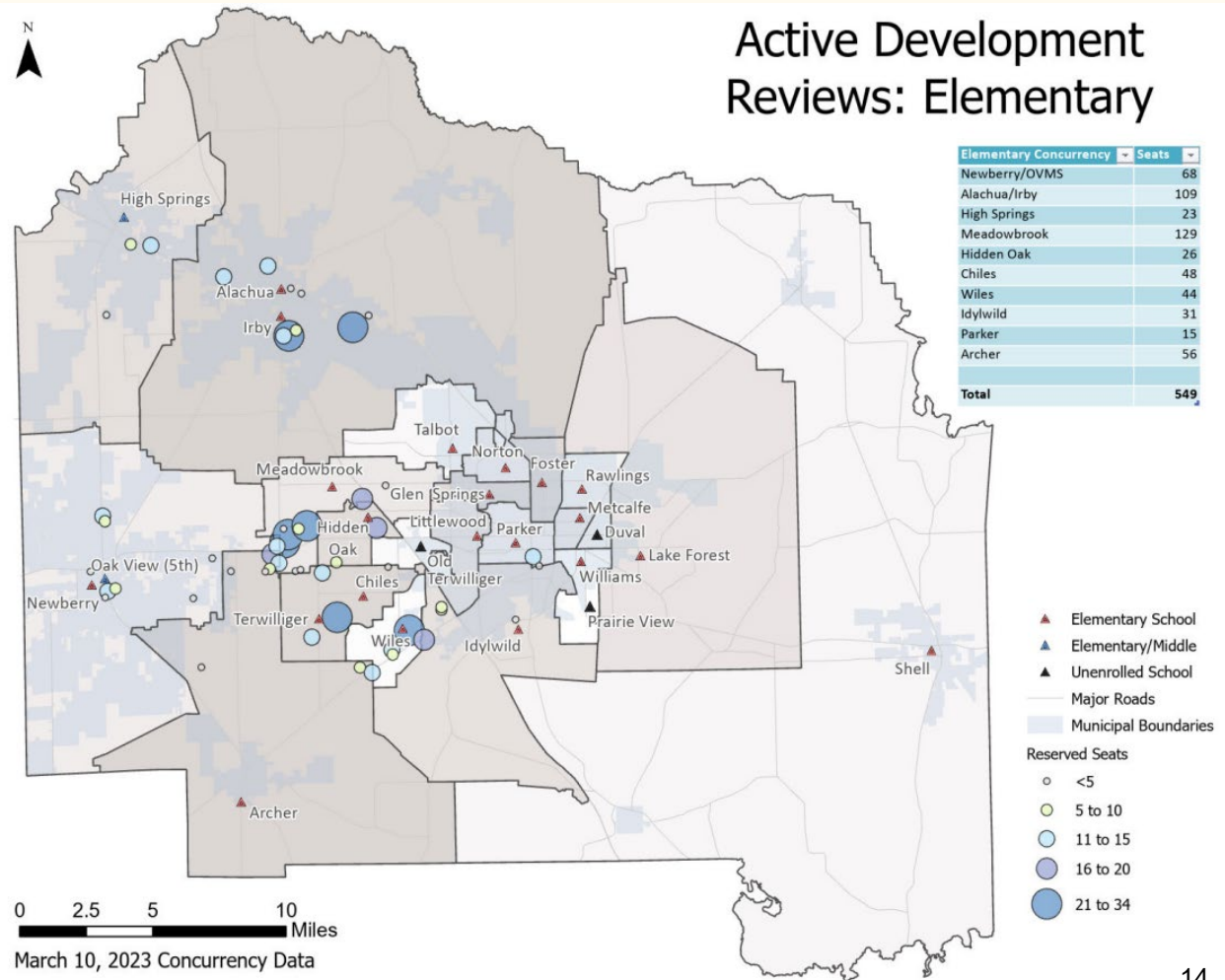
March 10, 2023 Concurrency Data
February 2023 Student Address point data for zone determination

Student Population Maps: High



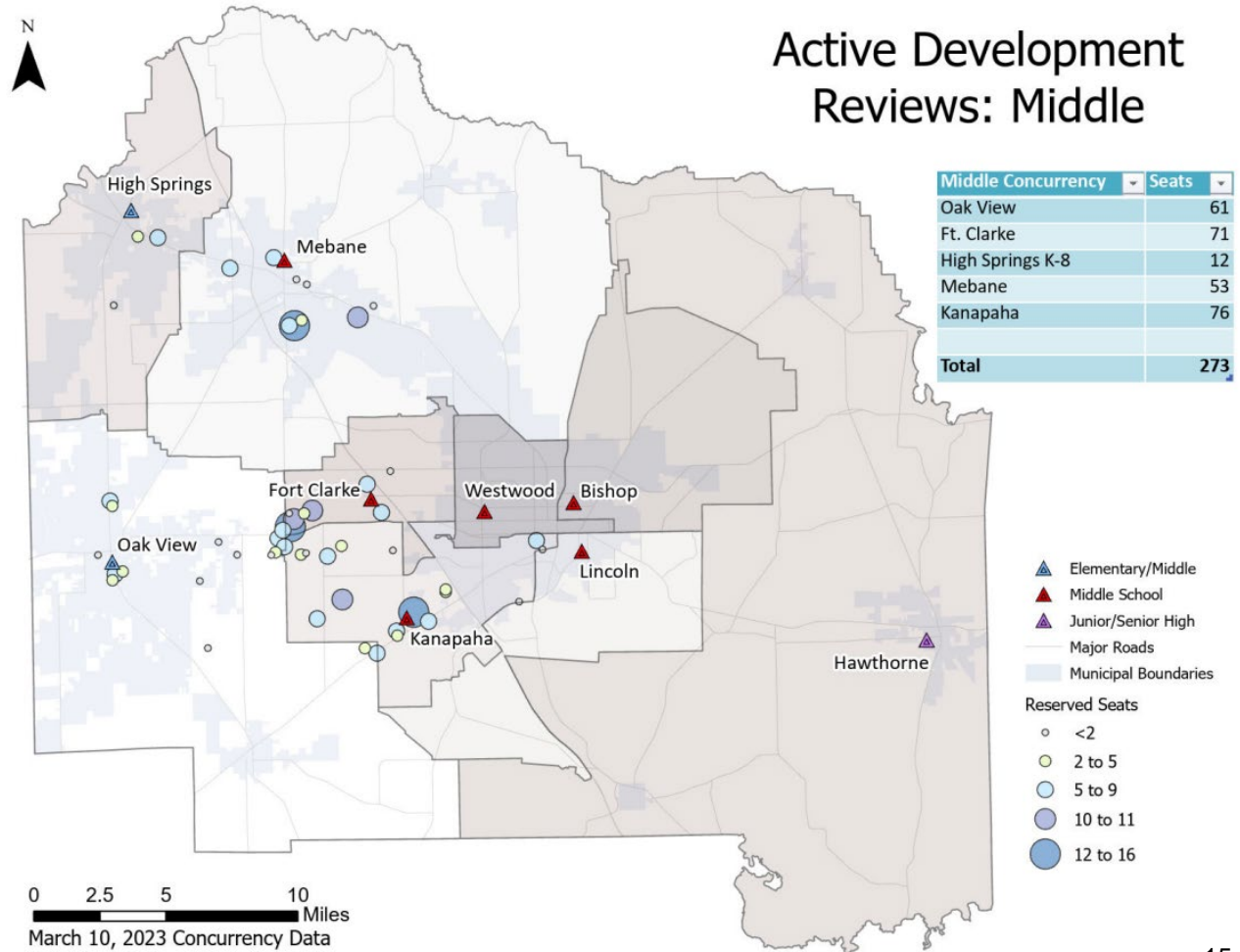
Active Development Maps: Elementary

Active Development Reviews: Elementary



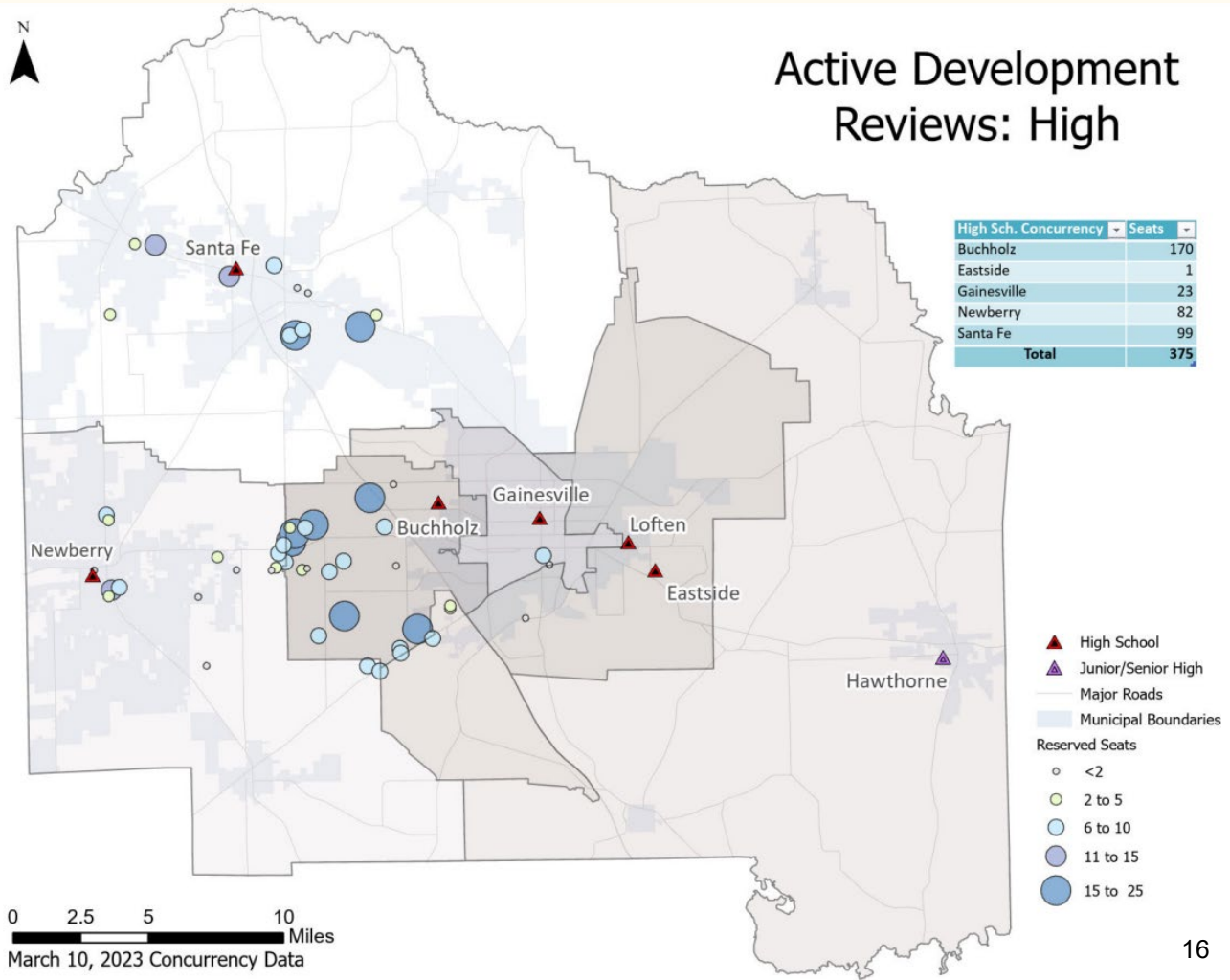
Active Development Maps: Middle

Active Development Reviews: Middle



Active Development Maps: High

Active Development Reviews: High



Active Development: Elementary/Middle/High Student #s

Elementary Concurrency	Seats
Newberry/OVMS	68
Alachua/Irby	109
High Springs	23
Meadowbrook	129
Hidden Oak	26
Chiles	48
Wiles	44
Idylwild	31
Parker	15
Archer	56
Total	549

Middle Concurrency	Seats
Oak View	61
Ft. Clarke	71
High Springs K-8	12
Mebane	53
Kanapaha	76
Total	273

High Sch. Concurrency	Seats
Buchholz	170
Eastside	1
Gainesville	23
Newberry	82
Santa Fe	99
Total	375

Community Input Sessions on Districtwide Rezoning (Spring 2023)

The purpose of these meetings is to share current enrollment, capacity and other information with the community and receive input on comprehensive rezoning BEFORE proposed attendance zone revisions, including maps, are developed.

April 19, 5:30 pm: Community Input Session—Oak View Middle

April 25, 5:30 pm: Community Input Session—Wiles Elementary

April 27, 5:30 pm: Community Input Session—Metcalfe Elementary

May 4, 5:30 pm: Community Input Session—Norton Elementary

May 10, 5:30 pm: Community Input Session—Santa Fe High School

Meeting Schedule for Districtwide Rezoning

August 16, 4 pm: School Board Workshop (including presentation of proposed revisions to attendance zones)

August 16–October 17 (Dates/times/locations TBD): Community Input Sessions to share proposed zones and receive input

September 19, 6 pm: Regular Board meeting (including 1st reading of proposed zones)

October 17, 4 pm: Public Hearing on proposed zones (ahead of regular 6pm Board meeting)

November 7, 6 pm: Regular Board meeting, (including 2nd reading/vote on revised attendance zones; must be held no less than 14 days from public hearing)

New attendance zones will take effect for the 2024 -25 school year.